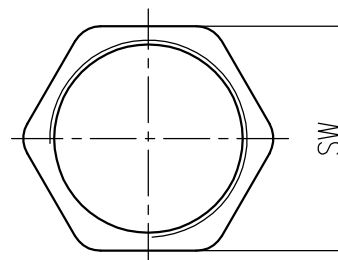
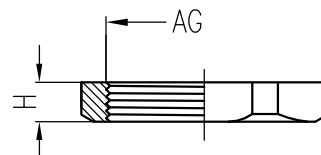
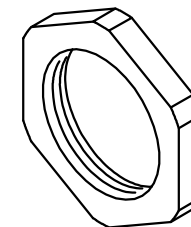


|         |                     |
|---------|---------------------|
| 日期/Date | 档案员<br>Filing Clerk |
|---------|---------------------|

| M公制螺纹/Metric Thread |                   |                  |                       |                       |                  |                |
|---------------------|-------------------|------------------|-----------------------|-----------------------|------------------|----------------|
| 序号<br>No.           | 产品名称<br>Part code | 产品料号<br>Part NO. | 螺纹规格AG<br>Thread size | 扳手尺寸SW<br>Wrench size | 厚度H<br>Thickness | 重量/Weight<br>g |
| 1                   | WNA-M12/S         | 1021050111101    | M12*1.5               | 15                    | 2.8              | 2              |
| 2                   | WNA-M16/S         | 1021050131101    | M16*1.5               | 18                    | 2.8              | 2.1            |
| 3                   | WNA-M20/S         | 1021050151101    | M20*1.5               | 22                    | 3                | 2.8            |
| 4                   | WNA-M22/S         | 1021050161101    | M22*1.5               | 24                    | 3                | 3.2            |
| 5                   | WNA-M25/S         | 1021050181101    | M25*1.5               | 27                    | 3                | 4              |
| 6                   | WNA-M32/S         | 1021050191101    | M32*1.5               | 35                    | 3.5              | 8              |
| 7                   | WNA-M40/S         | 1021050201101    | M40*1.5               | 50                    | 4.5              | 34.4           |
| 8                   | WNA-M50/S         | 1021050461101    | M50*1.5               | 57                    | 5                | 34.2           |
| 9                   | WNA-M63/S         | 1021050481101    | M63*1.5               | 70                    | 5.5              | 52.1           |

| PG制螺纹/PG Thread |                   |                  |                       |                       |                  |                |
|-----------------|-------------------|------------------|-----------------------|-----------------------|------------------|----------------|
| 序号<br>No.       | 产品名称<br>Part code | 产品料号<br>Part NO. | 螺纹规格AG<br>Thread size | 扳手尺寸SW<br>Wrench size | 厚度H<br>Thickness | 重量/Weight<br>g |
| 1               | WNA-PG7/S         | 1021050011101    | PG7                   | 15                    | 2.8              | 2              |
| 2               | WNA-PG9/S         | 1021050021101    | PG9                   | 18                    | 2.8              | 2.4            |
| 3               | WNA-PG11/S        | 1021050031101    | PG11                  | 21                    | 3                | 2.8            |
| 4               | WNA-PG13.5/S      | 1021050041101    | PG13.5                | 22                    | 3                | 4              |
| 5               | WNA-PG16/S        | 1021050051101    | PG16                  | 24                    | 3                | 3.8            |
| 6               | WNA-PG21/S        | 1021050061101    | PG21                  | 30                    | 3.5              | 4.5            |
| 7               | WNA-PG29/S        | 1021050071101    | PG29                  | 40                    | 4                | 14             |
| 8               | WNA-PG36/S        | 1021050081101    | PG36                  | 50                    | 4.5              | 16             |
| 9               | WNA-PG42/S        | 1021050091101    | PG42                  | 57                    | 5                | 21.1           |
| 10              | WNA-PG48/S        | 1021050101101    | PG48                  | 65                    | 5.5              | 25             |



技术参数:

- 材料: 黄铜镀镍
- 温度范围: -40℃-100℃, 短时间可以达到120℃

Technical specification:

- Material: nickel-plated brass
- Temperature range: -40℃-100℃, short-term 120℃

|               |  |              |  |                  |  |                 |  |            |  |                   |  |  |  |
|---------------|--|--------------|--|------------------|--|-----------------|--|------------|--|-------------------|--|--|--|
|               |  |              |  |                  |  | 表面处理<br>Finish  |  | -          |  | 图号<br>Drawing No. |  | -  |  |
|               |  |              |  |                  |  | 材料<br>Material  |  | -          |  | 产品代号<br>Part Code |  | WNA-XX/S   |  |
| 标记<br>Mark    |  | 处数<br>Number |  | 变更描述/Description |  | 签名<br>Signature |  | 日期<br>Date |  | 产品料号<br>Part No.  |  | -  |  |
|               |  | 姓名/Name      |  | 日期/Date          |  | 姓名/Name         |  | 日期/Date    |  | 比例<br>Scale       |  | 版本<br>REV.   |  |
| 绘图<br>Drawn   |  | BQ LUO       |  | 18.10.2010       |  | 标准化<br>Stand.   |  | -          |  | 重量<br>Weight      |  | -  |  |
| 审核<br>Checked |  | P RAO        |  | 18.10.2010       |  |                 |  |            |  | 数量<br>Qty.        |  | -  |  |
| 工艺<br>Process |  | -            |  | -                |  | 批准<br>Approved  |  | YY LIN     |  | 18.10.2010        |  | All Dimensions in mm<br>Original Size DIN A 4      |  |
|               |  |              |  |                  |  |                 |  |            |  |                   |  | <b>厦门唯恩电气有限公司</b><br>XIAMEN WAIN ELECTRICAL CO.LTD |  |