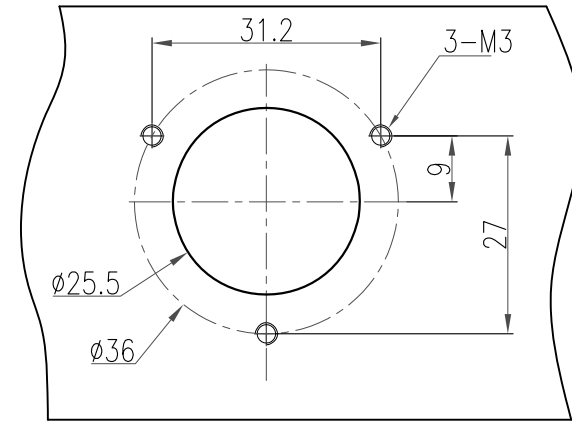
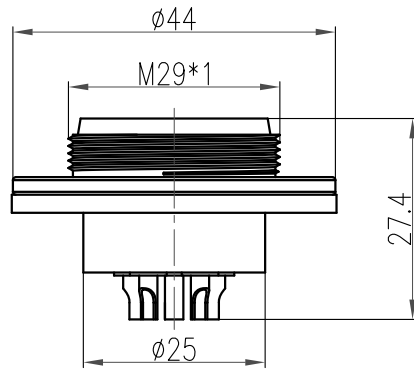


技术参数:

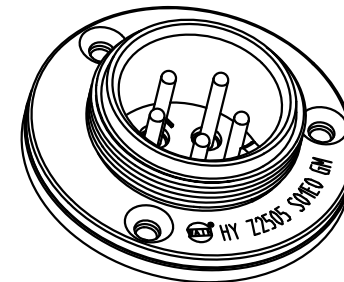
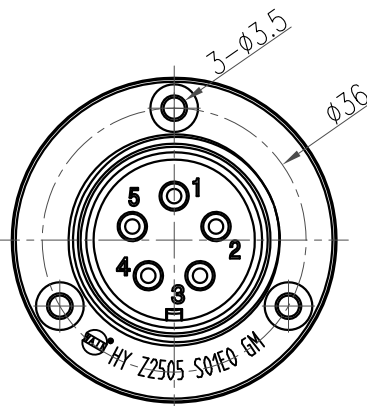
- 插针数: 5
- 额定电流: 20A
- 工作电压: 250V (AC)
- 耐电压: 2.0KV (常温状态)
1.0KV (湿热状态)
- 绝缘电阻: $\geq 2000\Omega$ (常温状态)
 $\geq 50\Omega$ (湿热状态)
- 接触电阻: $\leq 2m\Omega$
- 焊线规格: 焊线筒直径 $\phi 1.8mm$
- 外壳材料: 铜合金镀镍
- 插针材料: 铜合金镀金
- 绝缘件: 热固性材料
- 振动: 10-2000Hz, $147m/s^2$, 瞬断 $\leq 1us$
- 冲击: 加速度峰值 $490m/s^2$, 瞬断 $\leq 1us$
- 机械寿命: ≥ 500
- 锁定方式: 螺纹锁定
- 相对湿度: 90%-95% ($40^\circ C \pm 2^\circ C$ 时)
- 工作温度: $-40^\circ C \dots +105^\circ C$
- 防护等级: IP65

Technical specification:

- Number of contacts: 5
- Rated current: 20A
- Rated voltage: 250V (AC)
- Rated impulse voltage: 2.0KV(normal temperature)
1.0KV(muggy)
- Insulation resistance: $\geq 2000 M\Omega$ (normal temperature)
 $\geq 50 M\Omega$ (muggy)
- Contact resistance: $\leq 2 m\Omega$
- Welding wire: Diameter $\phi 1.8mm$
- Material of housing: The copper alloy plating nickel
- Material of contact: Gold-plated copper alloy
- Material of insert: Thermosets
- Vibration: Frequency10~2000Hz,accelerated speed $147m/s^2$, instant break $\leq 1us$
- Shock: Accelerated speed $490m/s^2$, instant break $\leq 1us$
- Mating cycles: ≥ 500
- Connector locking system: Thread locking
- Relative humidity: 90%~95% ($40^\circ C \pm 2^\circ C$)
- Working temperature: $-40^\circ C \dots +105^\circ C$
- Pollution degree: IP65



面板安装尺寸
Panel Cut-out



				表面处理 Finish		-		图号 Drawing No.		-	
				材料 Material		-		产品代号 Part Code		HY-Z2505-S01E0-GM	
标记 Mark	处数 Number	变更描述/Description		签名 Signature	日期 Date			产品料号 Part No.		1690053131001	
绘图 Drawn	姓名/Name	日期/Date	标准化 Stand.	姓名/Name	日期/Date	比例 Scale	版本 REV.	重量 Weight	数量 Qty.	产品名称 Part Name	
审核 Checked	TC CHEN	01.08.2014		-	-	1:1	V1.0	58.3g	-	-	
工艺 Process	-	-	批准 Approved	YY LUO	01.08.2014	All Dimensions in mm Original Size DIN A 4		厦门唯恩电气有限公司 XIAMEN WAIN ELECTRICAL CO.LTD			