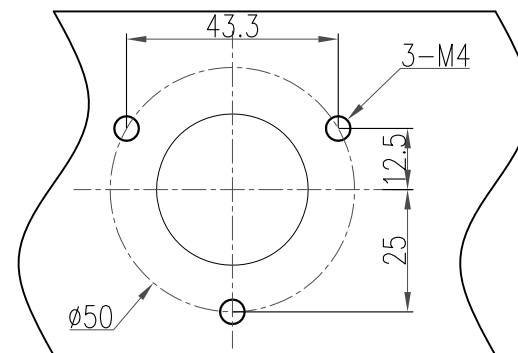
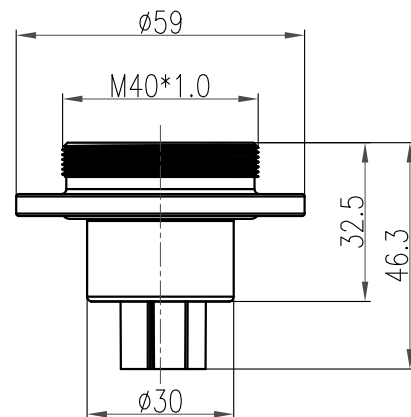


技术参数:

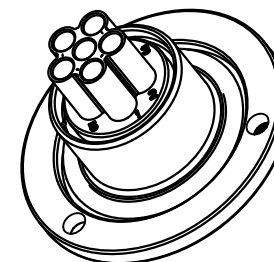
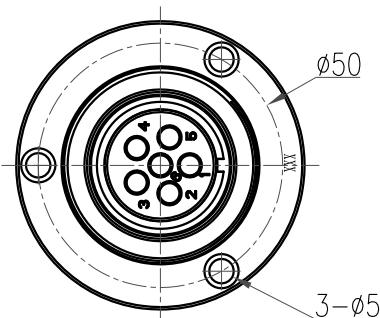
- 插针数: 6
- 额定电流: 25A
- 工作电压: 250V (AC)
- 耐电压: 2KV (AC)
- 绝缘电阻: $\geq 2000\text{M}\Omega$ (常态下)
- 接触电阻: $\leq 1\text{m}\Omega$
- 外壳材料: 铜合金镀镍
- 绝缘件: 热固性材料
- 密封件: 橡胶
- 振动: $10\text{--}2000\text{Hz}, 147\text{m/s}^2$, 瞬断 $\leq 1\text{us}$
- 冲击: 加速度峰值 490m/s^2 , 瞬断 $\leq 1\text{us}$
- 机械寿命: ≥ 500
- 锁定方式: 螺纹锁定
- 相对湿度: $90\%\text{--}95\%$ ($40\text{C}\pm 2\text{C}$ 时)
- 工作温度: $-40\text{C}\dots +105\text{C}$
- 防护等级: IP65

Technical specification:

- Number of contacts: 6
- Rated current: 25A
- Rated voltage: 250V (AC)
- Rated impulse voltage: 2KV (AC)
- Insulation resistance: $\geq 2000\text{ M}\Omega$ (normal temperature)
- Contact resistance: $\leq 1\text{ m}\Omega$
- Material of housing: The copper alloy plating nickel
- Material of Insert: Thermosets
- Sealing element: Rubber
- Vibration: Frequency $10\sim 2000\text{Hz}$, accelerated speed 147m/s^2 , instant break $\leq 1\text{us}$
- Shock: Accelerated speed 490m/s^2 , instant break $\leq 1\text{us}$
- Mechanical working life: ≥ 500
- Connector locking system: Thread locking
- Relative humidity: $90\%\sim 95\%$ ($40\text{C}\pm 2\text{C}$)
- Working temperature: $-40\text{C}\text{--}+105\text{C}$
- Pollution degree: IP65



面板安装尺寸
 Panel Cut-out



冷压针需另外订购
 order crimp contacts separately

				表面处理 Finish		-		图号 Drawing No.		-	
				材料 Material		-		产品代号 Part Code		HY-T3006-S01E0-GFC	
标记 Mark	处数 Number	变更描述/Description		签名 Signature	日期 Date			产品料号 Part No.		1690063201001	
	姓名/Name	日期/Date		姓名/Name	日期/Date	比例 Scale	版本 REV.	重量 Weight	数量 Qty.	产品名称 Part Name	
绘图 Drawn	TC CHEN	01.08.2014	标准化 Stand.	-	-	1:1.5	V1.0	150g	-	-	
审核 Checked	ZM LIN	01.08.2014								-	
工艺 Process	-	-	批准 Approved	YY LUO	01.08.2014	All Dimensions in mm Original Size DIN A 4		厦门唯恩电气有限公司 XIAMEN WAIN ELECTRICAL CO.,LTD			