

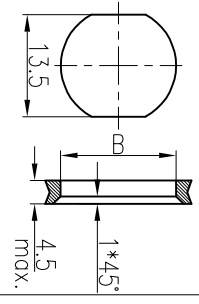
技术参数:

- 产品系列: M12 X-Code
- 插针数: 8
- 额定电流(40°C): 0.5A
- 额定电压: 50V ac, 60V d.c.
- 额定脉冲电压: 0.8kV
- 污染等级: 3
- 接触电阻: $\leq 10m\Omega$
- 绝缘电阻: $\geq 100M\Omega$
- 锁紧方式: 螺纹式M12*1
- 电缆类型: PUR Cat.6a
- 线规: 0.14mm² (26AWG)
- 防护等级: IP67
- 插拔次数: ≥ 100
- 温度范围: -40°C ... +85°C
- 外壳材料: 铸锌镍镍
- 插体材料: PA
- 插针材料: 铜合金
- 插针电鍍材料: 金

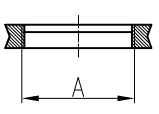
面板安装尺寸

Panel Cut-out

通孔安装
With bore hole



螺纹安装
With thread to screw in



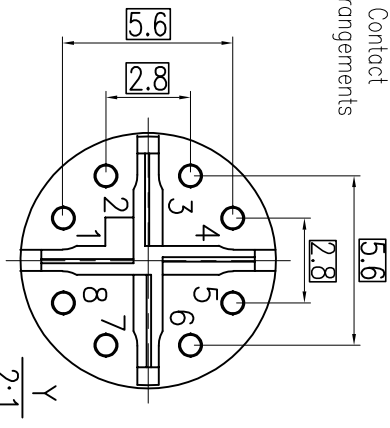
比例/scale 1:1

比例/scale 1:1

A	B
PG9	Ø15.3
M16x1.5	Ø16.1

8-Pole

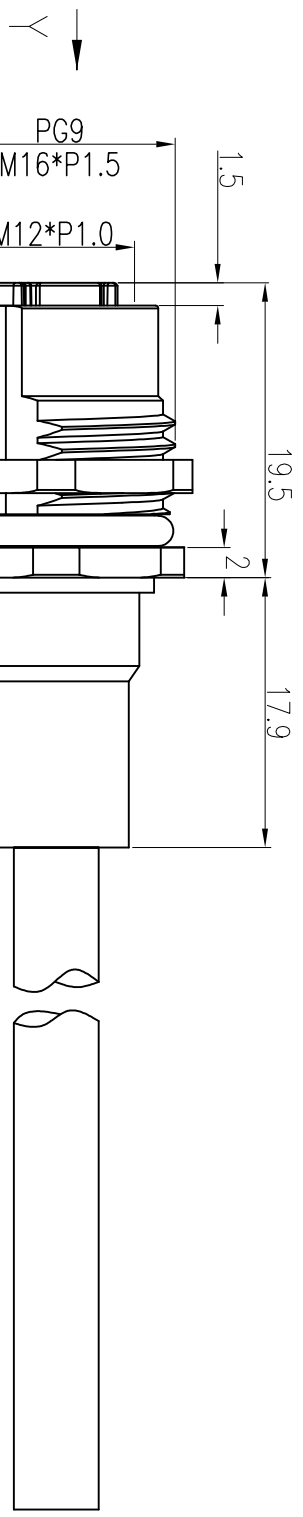
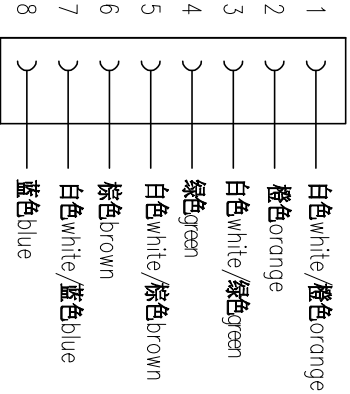
针位图
Contact arrangements



	X	Y
1	-1.40	-2.80
2	-2.80	-1.40
3	-2.80	1.40
4	-1.40	2.80
5	1.40	2.80
6	2.80	1.40
7	2.80	-1.40
8	1.40	-2.80

接线图

Circuit diagram



Technical specification:

- Series: M12 X-Code
- Number of contacts: 8
- Rated current (40°C): 0.5A
- Rated voltage: 50V ac, 60V d.c.
- Rated impulse voltage: 0.8kV
- Pollution degree: 3
- Contact resistance: $\leq 10m\Omega$
- Insulation resistance: $\geq 100M\Omega$
- Connector locking system: screw M12*1
- Cable Type: PUR Cat.6a
- Wire Spec: 0.14mm² (26AWG)
- Degree of protection: IP67
- Mating cycles: ≥ 100
- Temperature range: -40°C ... +85°C
- Material of housing: Zinc diecasting nickel plated
- Material of insert: PA
- Material of contact: copper alloy
- Contact plating: Au

标记/Mark	处数/Number	变更描述/Description	姓名/Name	日期/Date	标准/Stand.	姓名/Name	日期/Date	表面处理/Finish	材料/Material	比例/Scale	版本/REV.	重量/Weight	数量/Qty.	图号/Drawing No.	产品代号/Part Code	产品料号/Part No.	产品名称/Part Name
绘图/Drawn	YP	ZHUANG	12.05.2020	标准/Stand.	-	2:1	V1.0	-	-	-	-	-	-	图号/Drawing No.	M12-F08X-BKR-PG9-Cat.6A	1630083024003	厦门唯恩电气有限公司
审核/Checked	ZQ	XU	12.05.2020	标准/Stand.	-	2:1	V1.0	-	-	-	-	-	-	图号/Drawing No.	M12-F08X-BKR-PG9-Cat.6A	1630083024003	厦门唯恩电气有限公司
工艺/Process	-	-	-	标准/Stand.	-	2:1	V1.0	-	-	-	-	-	-	图号/Drawing No.	M12-F08X-BKR-PG9-Cat.6A	1630083024003	厦门唯恩电气有限公司
				标准/Stand.	-	2:1	V1.0	-	-	-	-	-	-	图号/Drawing No.	M12-F08X-BKR-PG9-Cat.6A	1630083024003	厦门唯恩电气有限公司
				标准/Stand.	-	2:1	V1.0	-	-	-	-	-	-	图号/Drawing No.	M12-F08X-BKR-PG9-Cat.6A	1630083024003	厦门唯恩电气有限公司
				标准/Stand.	-	2:1	V1.0	-	-	-	-	-	-	图号/Drawing No.	M12-F08X-BKR-PG9-Cat.6A	1630083024003	厦门唯恩电气有限公司
				标准/Stand.	-	2:1	V1.0	-	-	-	-	-	-	图号/Drawing No.	M12-F08X-BKR-PG9-Cat.6A	1630083024003	厦门唯恩电气有限公司
				标准/Stand.	-	2:1	V1.0	-	-	-	-	-	-	图号/Drawing No.	M12-F08X-BKR-PG9-Cat.6A	1630083024003	厦门唯恩电气有限公司
				标准/Stand.	-	2:1	V1.0	-	-	-	-	-	-	图号/Drawing No.	M12-F08X-BKR-PG9-Cat.6A	1630083024003	厦门唯恩电气有限公司
				标准/Stand.	-	2:1	V1.0	-	-	-	-	-	-	图号/Drawing No.	M12-F08X-BKR-PG9-Cat.6A	1630083024003	厦门唯恩电气有限公司